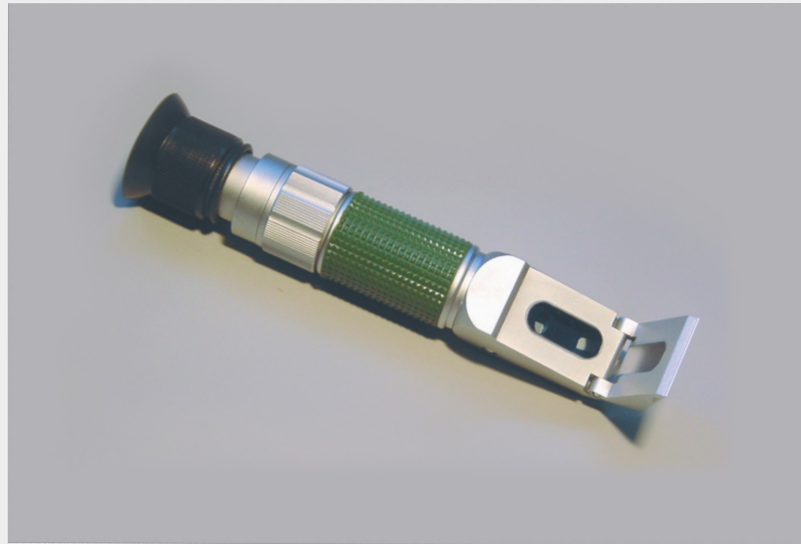


Hand refractometer

for reading sugar levels in fruit juices and jams



precise

handheld

durable

TECHNICAL CHARACTERISTICS:

- Scale: 0-80% Brix
- Resolution: 1%
- Accuracy: $\pm 1\%$
- Alloy body
- Crystal prisms and lenses
- It's possible to choose the range 0-50% or 50/80% by rotating the knob.

DESCRIPTION

This instrument is designed for the rapid and precise measurement of the concentration of sugar solutions. Adjusting screw until the demarcation line between brightness and

TEMPERATURE CORRECTION

Put several drops of distilled water on the surface of the refraction prism. Adjust the adjusting screw until the demarcation line between brightness and darkness is just on the graduated line 0%. Then proceed on the measurement of the testing object and the reading result obtained is the correct one.

TR Turoni s.r.l.

Via Copernico, 26 - 47122 Forlì (Italy)

Tel. +39 0543 724848

info@trturoni.com - www.trturoni.com